



Lithium-Ion Battery

### Features and Benefits

- Long cycle life
- ISO 13485 certified
- Fully welded hermetically sealed design
- Thermal safety shutdown separator
- Long-shelf life

### Applications

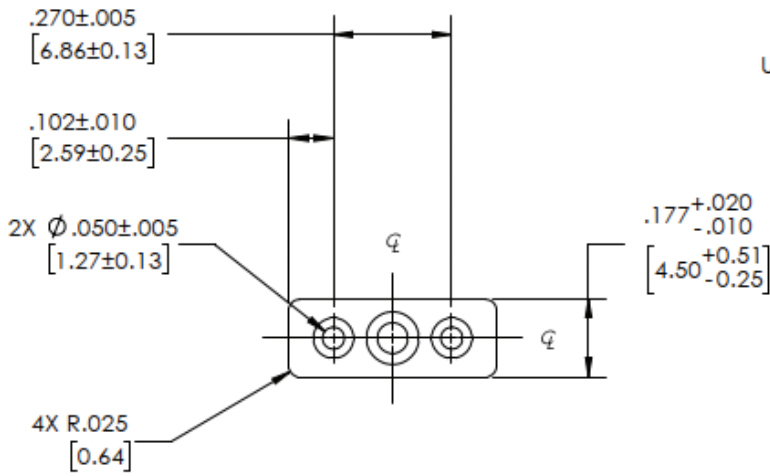
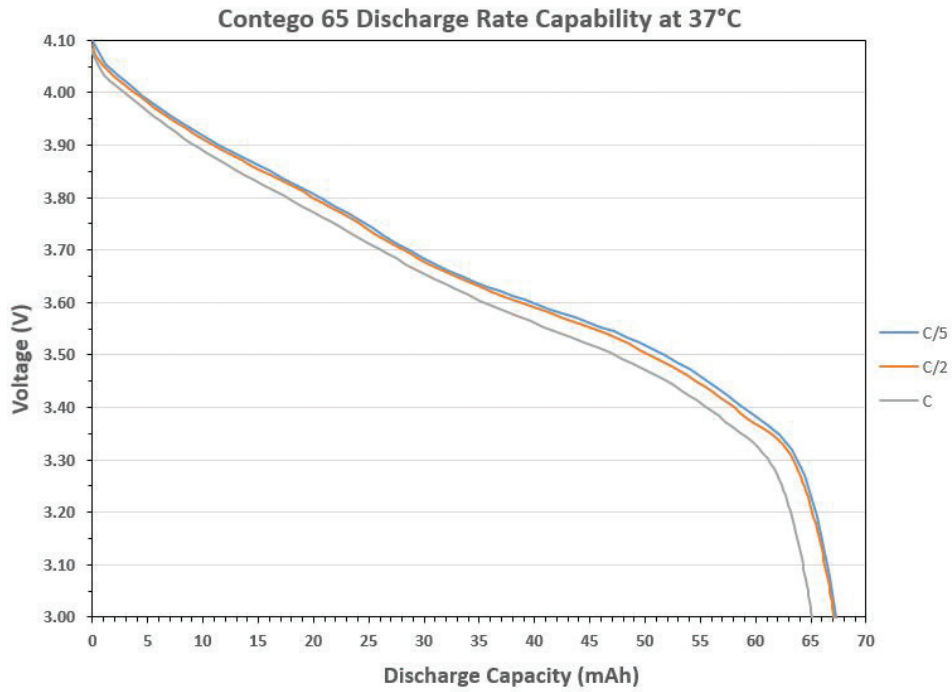
- Neuromodulators
- Cochlear implants
- Sleep apnea

Implantable grade lightweight, high energy density cell with superior rate capability and excellent cycle life

### Specifications

Part Number	95-1655
Weight	2.6 g
Dimensions	See details on back
Nominal Voltage	3.6V
Voltage Range	3.0 to 4.1V
Capacity (beginning life)	65 mAh at C/5 charge to 4.1V C/5 discharge to 3.0V and 20°C (68°F)
Maximum Charge Rate	C Rate (65 mA)
Cycle Life at 37 °C (99°F)	>80% capacity after 1,000 cycles C/2 charge to 4.1V, C/2 discharge to 3.0V
Volume	0.88 cc
Energy Density	280 Wh/L
Operating Temperature	37±2°C (99±4°F)
Recommended Storage Conditions	20±5°C (68±9°F)
Case Material	Titanium
Terminals	Molybdenum
Transportation Safety	UN recommendations on the transportation of dangerous goods ST/SG/AC.10/11
Battery Safety	IEC 62133

# Contego 65 mAh Battery



UNIT: INCH [MM]

